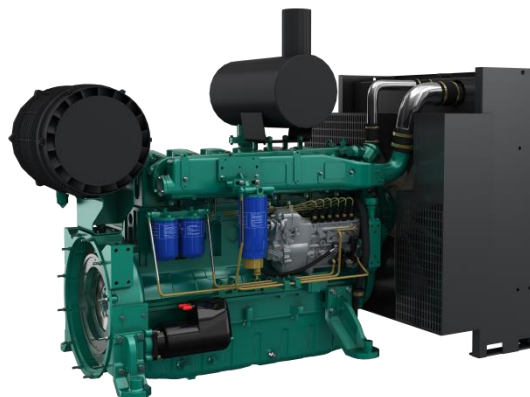


## G-Drive Engine WP10 Series

### General Specifications

Bore & Stroke	126x130 mm
Displacement	9.726 L
Cylinder Number	6
Compression Ratio	17:1
Fuel System	Mechanical Pump
Governor Method	Mechanic/Electronic
Aspiration	TA
Emission Standard	EU Stage II



Engine Speed	Engine Output		Typical Generator Output
	Prime(PRP)	Standby(ESP)	
RPM	kW	kW	kWe/kVA
1500	182	200	150/187.5
1500	216	238	180/225
1500	240	264	200/250

Engine Speed	Engine Output		Typical Generator Output
	Prime(PRP)	Standby(ESP)	
RPM	kW	kW	kWe/kVA
1800	182	200	150/187.5
1800	216	238	180/225
1800	240	264	200/250

### Standard Equipment

#### Engine and block

- Cast iron frame style body structure
- One-piece forged crankshaft
- Separate cast iron cylinder heads and replaceable dry cylinder liners
- Aluminum alloy pistons with oil cooling gallery

#### Cooling system

- Radiator and hoses supplied separately
- Thermostatically-controlled system with poly belt driven
- Coolant pump and pusher fan

#### Lubrication system

- Flat bottom large capacity oil pan (24 L)
- Spin-on full-flow lub oil filter
- High capacity gear driven lube oil pump

### Optional Equipment

- Radiator for tropical environment (50°C)
- Shutoff solenoid mounted on the fuel pump
- Air heater for cold start
- Manual drawing off oil pump
- Immersion heater with thermostat
- Tool Kits

#### Fuel system

- P type fuel injection pump and injector for higher inject pressure
- Duplex fine filter and water separation filter assembly with transparent cup

#### Air intake and exhaust system

- Mid-position and below inlet turbocharger optimized for industrial application
- Special rear mounted air filter with restriction indicator
- Strong clip for pipe connecting
- Stainless steel exhaust manifold shield for heat isolation

#### Electrical system

- 24V electric starter motor and battery charging alternator

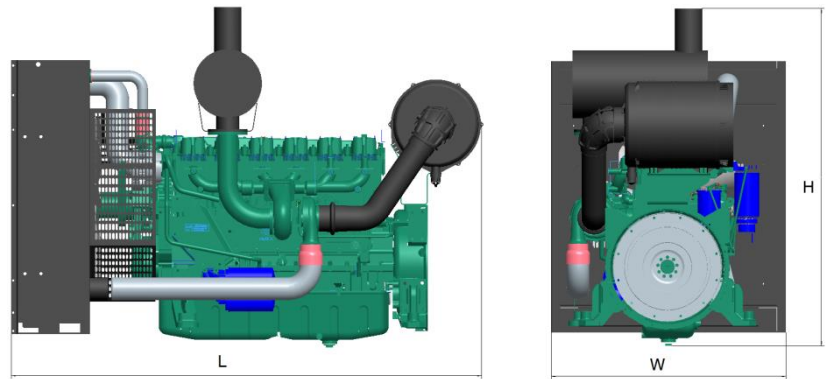
#### Flywheel and housing

- SAE1 flywheel housing and 11.5/14" flywheel

	Continuous Power(COP)	Prime Power(PRP)	Standby Power(ESP)
Mean engine load factor	100%	≤70% per 250 h	≤80% per 24 h
Annual working time	Unlimited	Unlimited	≤200 h
Time at full load	Unlimited(Max. Load ≤0.85PRP)	≤500 h per year	≤25 h per year
Overload capacity	No	1 h per 12 h(10% overload)	No

## Dimensions and Weight

Length	2088 mm
Width	1040 mm
Height	1493 mm
Dry Weight	900 kg



### Power definition

Standard ISO 3046/1 -1995(F)

### Reference conditions

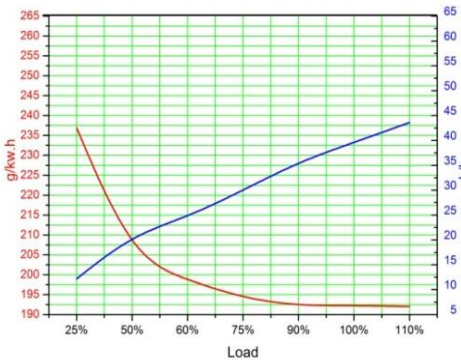
Ambient temperature 25°C  
 Barometric pressure 100kPa  
 Relative humidity 30%

### Fuel

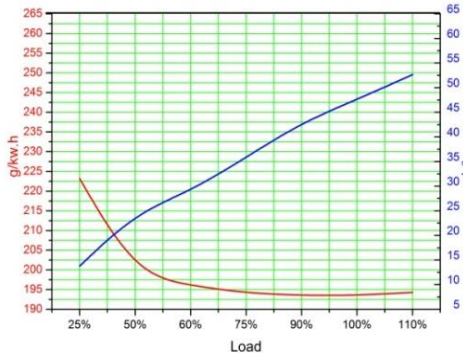
Relative density 0.840±0.005  
 Lower calorific power 42 700 kJ/kg  
 Consumption tolerances ± 5 %

### Lube oil

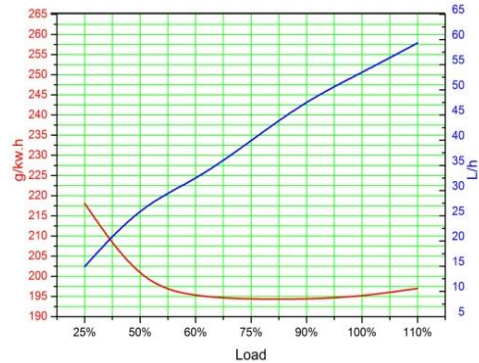
Recommend grade CF 15W/40



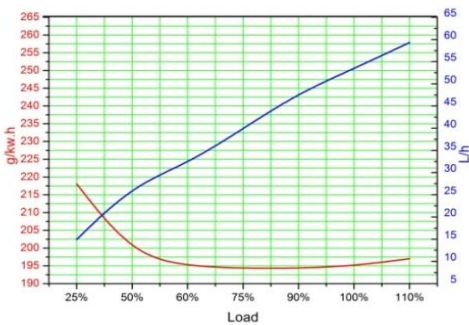
WP10D200E200-182kW/1500rpm



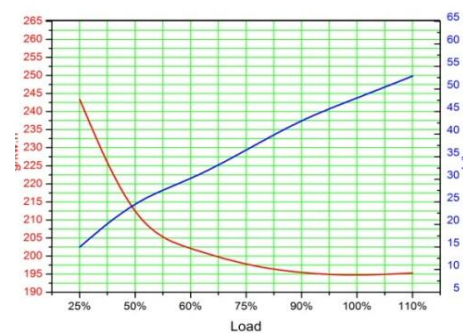
WP10D238E200-216kW/1500rpm



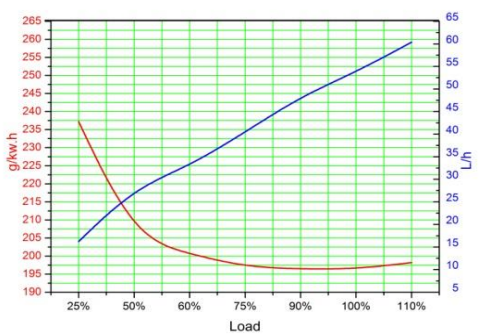
WP10D264E200-240kW/1500rpm



WP10D200E201-182kW/1800rpm



WP10D238E201-216kW/1800rpm



WP10D264E201-240kW/1800rpm