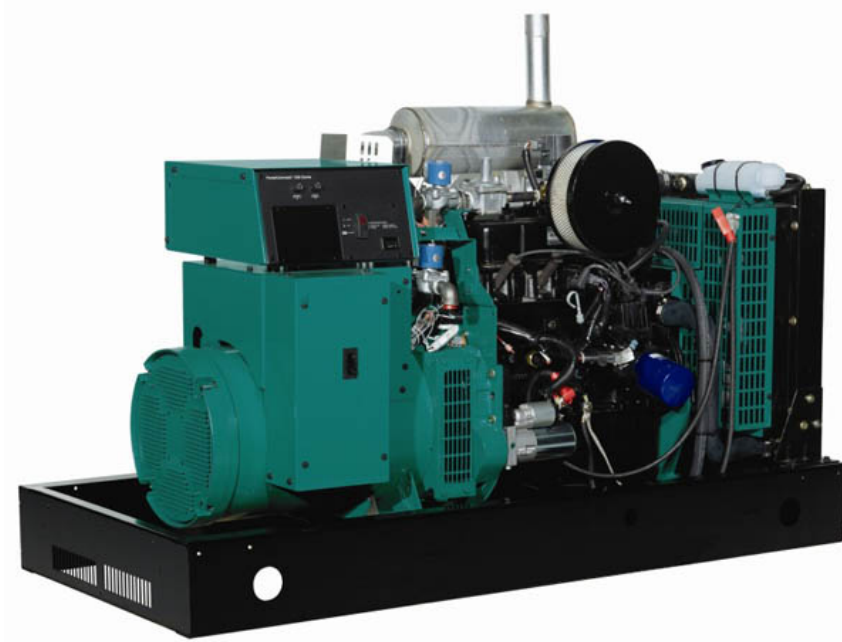


ژنراتور : Stamford

موتور دیزل : Cummins

Standby		Prime		دیزل ژنراتور
KVA	KW	KVA	KW	
275	220	250	200	



موتور دیزل		
Manufacturer	Cummins	تولید کننده
Type	6LTAA8.9G2	تیپ
Number of cylinders	6	تعداد سیلندر ها
Cylinder arrangement	Vertical in-line	آرایش سیلندر ها
Displacement , Liters	8.9	جا به جایی
Bore × Stroke , mm	114 X 145	قطر سیلندر × کورس پیستون
Compression Ratio	14.5 : 1	نسبت تراکم
Aspiration	Turbocharged	سیستم تنفس
Gross engine power, kWb	200	قدرت ناخالص موتور
Combustion air flow, L/sec	353	جریان هوای احتراق
Exhaust gas temp.(after turbo) , °C	430	دمای گاز خروجی از اگزوز
Mean Piston Speed , m/s	7.25	میانگین سرعت پیستون

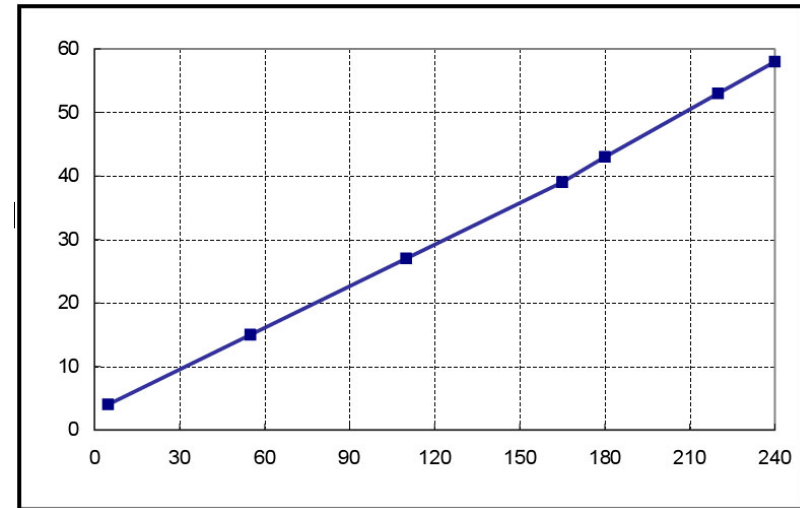
ژنراتور

Manufacturer	Stamford	تولید کننده
Type	UCDI274K	تیپ
Standby power at rated voltage ,KVA	275	توان standby در ولتاژ نامی
Efficiency, %	92.8	راندمان
Power factor	0.8	ضریب قدرت
Phase	3	فاز
Frequency, Hz	50	فرکانس
Speed, Rpm	1500	سرعت
Voltage, V	380	ولتاژ
Stator windings	Double layer concentric	سیم پیچ استاتور
Voltage Regulation, %	± % 1.0	تنظیم ولتاژ
Over speed, Rpm	2250	مداکثر سرعت مجاز
Short circuit ratio	1/Xd	جریان اتصال کوتاه
Insulation class	H	کلاس عایق
Protection class	IP23	کلاس حفاظتی
Cooling air volume,m ³ / sec	0.58	دبی هوای فنک کننده

DONGFENG CUMMINS ENGINE Co., Ltd. XiangFan HuBei P.R.CHINA ENGINE DATASHEET—for G-drive		ENGINE MODEL 6LTAA8.9-G2		FREFORMANCE CURVE FR92516
		ENGINE FAMILY D56	CPL 3079	2007/06
Displacement	8.9 L	Air intake way	Air-air after-cooled, turbo-charged	
Cylinder bore	114 mm	Cylinder quantity	6	
Stroke	145 mm			
Fuel system	P7100 pump _ GAC governor / BYC ASIMCO		Speed-droop	5%
Engine testing with fuel system, water pump and oil pump, without air compressor, alternator, fan, other options and driving accessory. Testing condition: air intake resistance 250 mmHg, exhaust back pressure 50 mmHg.				

Engine Speed-RPM	Standby Power		Base Output Power		Continuous Power	
	kW	HP	kW	HP	kW	HP
1500	240	322	220	295	180	241

	Output Power		Fuel consumption	
	%	kW	HP	g/kW.h
Standby Power				
100	240	322	199	58
Base Output Power				
100	220	295	197	53
75	165	221	197	39
50	110	147	201	27
25	55	74	220	15
Continuous Power				
100	180	241	196	43



	DONGFENG CUMMINS ENGINE Co., Ltd. XiangFan HuBei P.R.CHINA ENGINE DATASHEET—for G-drive	ENGINE MODEL 6LTAA8.9-G2		FREFORMANCE CURVE FR92516
		ENGINE FAMILY D56	CPL 3079	ENGINE FAMILY D56

Typical engine data

Net weight	kg	650
Rotate part instantaneous inertia _ without flywheel	kg.m2	0.72
Distance between gravity center and rear surface of cylinder block	mm	427
Distance between gravity center and center line above of crankshaft	mm	163

Engine installation

Static bent torque permitted—rear surface of cylinder block	Nm	1356
Static bent torque permitted—front surface of cylinder block	Nm	N/A
Static bent torque permitted—flank surface of flywheel-house	Nm	N/A

Exhaust system

Max. back pressure	kPa	10.1
Diameter of exhaust pipe recommended	mm	N/A

Air intake system

Max. air intake resistance		
Dirty filter	kPa	6.2
Normal air cleaner and clean filter	kPa	3.7
Heavy duty cleaner and clean filter	kPa	N/A
Diameter of intake pipe recommended	mm	N/A

Lubrication system

Normal oil pressure range

Low idle	kPa	103
Rated speed	kPa	276_414
Max. oil temperature permitted in oil pan	°C	121
Oil pan capacity (Max _ Min)	L	N/A
Lubrication system Min. capacity (oil pan + oil filter)	L	27.6
Usage inclining degree permitted (any direction)	°	N/A

Fuel system

Fuel injection pump model	BYC P7100 pump with GAC governor	
Max. fuel input resistance of transfer pump	kPa	20.3
Max. overflow fuel resistance at overflow pipe of injector	kPa	33.9
Total fuel overflow amount	L/h	83

Cooling system

Coolant capacity-engine only	L	11.1
Max. coolant cycling resistance exterior engine	kPa	N/A
Thermostat adjusting temperature (range)	°C	82_93
Min. opening pressure of radiator cap	kPa	103
Max. coolant temperature permitted _ Standby Power/Base output Power	°C	110/104

Electric system

Starter	12V	24V
Battery charging system	100A	70A
Max. starting circuit resistance	0.001Ω	0.002Ω
Min. battery capacity_ -12°C (CCA: Cold Cranking Ampere)	1500CCA	750CCA

Technical data _ under standard fuel delivery rate FR92516

Engine speed _ RPM	Base output Power	Standby Power
	1500	1500

Output Power _ kW	220	240
Torque _ Nm	1401	1528
Low idle _ RPM	850-950	850-950
Friction energy output _ kW	26	26
Piston speed _ m/s	7.25	7.25
Engine coolant flow _ L/sec	3.3	3.3
Air intake flow _ L/sec	N/A	N/A
Exhaust flow _ L/sec	N/A	N/A
Exhaust temperature _ °C	430	470
Environment energy output _ kW	N/A	N/A
Coolant energy output _ kW	95	105
Fuel energy output _ kW	0.1	0.1

All data's error within $\pm 5\%$.

UCDI274K

WINDING 311

CONTROL SYSTEM	SEPARATELY EXCITED BY P.M.G.		
A.V.R.	MX321	MX341	
VOLTAGE REGULATION	± 0.5 %	± 1.0 %	With 4% ENGINE GOVERNING
SUSTAINED SHORT CIRCUIT	REFER TO SHORT CIRCUIT DECREMENT CURVES (page 7)		

CONTROL SYSTEM	SELF EXCITED			
A.V.R.	SX460	SX440	SX421	
VOLTAGE REGULATION	± 1.5 %	± 1.0 %	± 0.5 %	With 4% ENGINE GOVERNING
SUSTAINED SHORT CIRCUIT	SERIES 4 CONTROL DOES NOT SUSTAIN A SHORT CIRCUIT CURRENT			

INSULATION SYSTEM	CLASS H							
PROTECTION	IP23							
RATED POWER FACTOR	0.8							
STATOR WINDING	DOUBLE LAYER CONCENTRIC							
WINDING PITCH	TWO THIRDS							
WINDING LEADS	12							
STATOR WDG. RESISTANCE	0.0126 Ohms PER PHASE AT 22°C SERIES STAR CONNECTED							
ROTOR WDG. RESISTANCE	2.08 Ohms at 22°C							
EXCITER STATOR RESISTANCE	20 Ohms at 22°C							
EXCITER ROTOR RESISTANCE	0.091 Ohms PER PHASE AT 22°C							
R.F.I. SUPPRESSION	BS EN 61000-6-2 & BS EN 61000-6-4, VDE 0875G, VDE 0875N. refer to factory for others							
WAVEFORM DISTORTION	NO LOAD < 1.5% NON-DISTORTING BALANCED LINEAR LOAD < 5.0%							
MAXIMUM OVERSPEED	2250 Rev/Min							
BEARING NON-DRIVE END	BALL. 6310-2RS (ISO)							
WEIGHT COMP. GENERATOR	727 kg							
WEIGHT WOUND STATOR	304 kg							
WEIGHT WOUND ROTOR	272.6 kg							
WR ² INERTIA	2.3934 kgm ²							
SHIPPING WEIGHTS in a crate	740 kg							
PACKING CRATE SIZE	123 x 67 x 103 (cm)							

	50 Hz				60 Hz			
TELEPHONE INTERFERENCE	THF<2%				TIF<50			
COOLING AIR	0.58 m ³ /sec 1230 cfm				0.69 m ³ /sec 1463 cfm			
VOLTAGE SERIES STAR (Y)	380/220	400/231	415/240	440/254	416/240	440/254	460/266	480/277
VOLTAGE PARALLEL STAR (Y)	190/110	200/115	208/120	220/127	208/120	220/127	230/133	240/138
VOLTAGE SERIES DELTA	220/110	230/115	240/120	254/127	240/120	254/127	266/133	277/138
KVA BASE RATING FOR REACTANCE VALUES	250	250	250	n/a	291	299	312.5	312.5
X _d DIR. AXIS SYNCHRONOUS	2.825	2.550	2.369	-	3.161	2.903	2.776	2.550
X' _d DIR. AXIS TRANSIENT	0.132	0.119	0.111	-	0.148	0.136	0.130	0.119
X'' _d DIR. AXIS SUBTRANSIENT	0.086	0.078	0.072	-	0.097	0.089	0.085	0.078
X _q QUAD. AXIS REACTANCE	1.263	1.140	1.059	-	1.413	1.298	1.241	1.140
X'' _q QUAD. AXIS SUBTRANSIENT	0.152	0.137	0.127	-	0.170	0.156	0.149	0.137
X _L LEAKAGE REACTANCE	0.066	0.060	0.056	-	0.074	0.068	0.065	0.060
X ₂ NEGATIVE SEQUENCE	0.120	0.108	0.100	-	0.134	0.123	0.118	0.108
X ₀ ZERO SEQUENCE	0.022	0.020	0.019	-	0.025	0.023	0.022	0.020

REACTANCES ARE SATURATED		VALUES ARE PER UNIT AT RATING AND VOLTAGE INDICATED						
T' _d TRANSIENT TIME CONST.	0.049 s							
T'' _d SUB-TRANSTIME CONST.	0.02 s							
T' _{do} O.C. FIELD TIME CONST.	1.27 s							
T _a ARMATURE TIME CONST.	0.018 s							
SHORT CIRCUIT RATIO	1/X _d							

UCDI274K

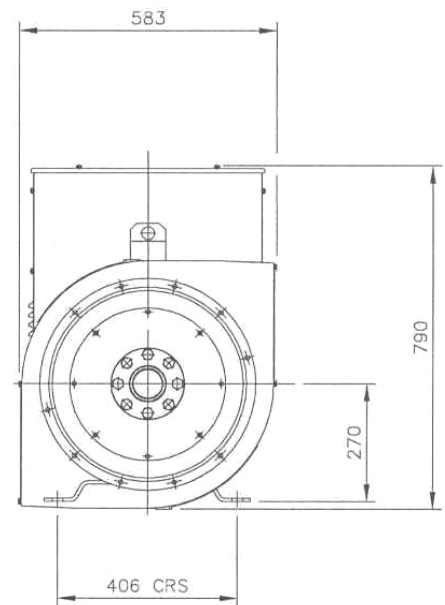
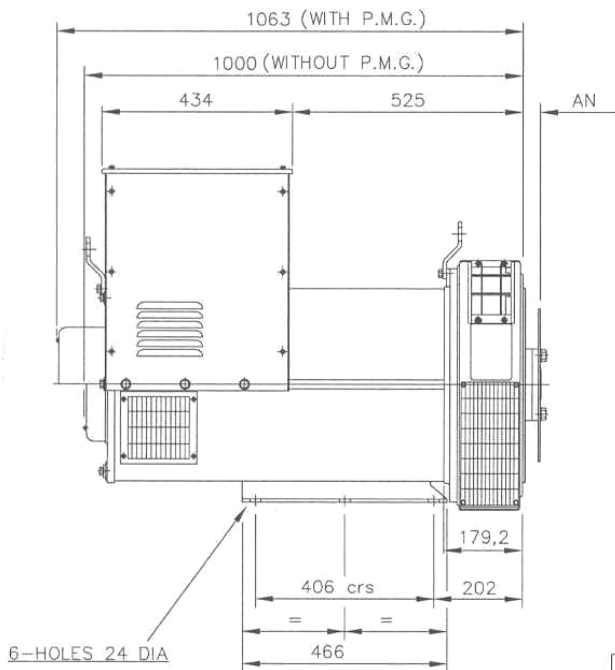
Winding 311 / 0.8 Power Factor

RATINGS

Class - Temp Rise	Cont. F - 105/40°C				Cont. H - 125/40°C				Standby - 150/40°C				Standby - 163/27°C				
50 Hz	Series Star (V)	380	400	415	440	380	400	415	440	380	400	415	440	380	400	415	440
	Parallel Star (V)	190	200	208	220	190	200	208	220	190	200	208	220	190	200	208	220
	Series Delta (V)	220	230	240	254	220	230	240	254	220	230	240	254	220	230	240	254
kVA	229.0	229.0	229.0	n/a	250.0	250.0	250.0	n/a	265.0	265.0	265.0	n/a	275.0	275.0	275.0	n/a	
kW	183.2	183.2	183.2	n/a	200.0	200.0	200.0	n/a	212.0	212.0	212.0	n/a	220.0	220.0	220.0	n/a	
Efficiency (%)	92.8	93.0	93.1	n/a	92.5	92.7	92.8	n/a	92.2	92.4	92.6	n/a	92.0	92.2	92.4	n/a	
kW Input	197.4	197.0	196.8	n/a	216.2	215.7	215.5	n/a	229.9	229.4	228.9	n/a	239.1	238.6	238.1	n/a	

60 Hz	Series Star (V)	416	440	460	480	416	440	460	480	416	440	460	480	416	440	460	480
	Parallel Star (V)	208	220	230	240	208	220	230	240	208	220	230	240	208	220	230	240
	Series Delta (V)	240	254	266	277	240	254	266	277	240	254	266	277	240	254	266	277
kVA	267.0	275.0	286.5	286.5	291.0	299.0	312.5	312.5	304.0	312.5	331.3	331.3	312.0	320.0	343.8	343.8	
kW	213.6	220.0	229.2	229.2	232.8	239.2	250.0	250.0	243.2	250.0	265.0	265.0	249.6	256.0	275.0	275.0	
Efficiency (%)	92.9	93.0	93.1	93.2	92.6	92.7	92.8	92.9	92.4	92.6	92.5	92.7	92.2	92.4	92.3	92.5	
kW Input	229.9	236.6	246.2	245.9	251.4	258.0	269.4	269.1	263.2	270.0	286.5	285.9	270.7	277.1	298.0	297.3	

DIMENSIONS



COUPLING DISC	AN
SAE 11,5	39,68
SAE 14	25,4