

ژنراتور : Mecc Alte

موتور دیزل : Deutz

Standby		Prime		دیزل ژنراتور
KVA	KW	KVA	KW	
180.4	144.3	164	131.2	



موتور دیزل

Manufacturer	Deutz	تولید کننده
Type	BF6M1013EC	تیپ
Number of cylinders	4	تعداد سیلندر ها
Cylinder arrangement	in-line	آرایش سیلندر ها
Cycle	4 stroke	چرخه
Aspiration	Turbo charged CAC	سیستم تنفس
Bore × Stroke , mm	105X130	قطر سیلندر × کورس پیستون
Displacement , Liters	4.76	جا به جایی
Speed Governor	Mechanical	سرعت گاورنر
Cooling System	water-cooled	سیستم فنک کننده
Frequency	50Hz	فرکانس

ژنراتور

Manufacturer	Mecc alte	تولید کننده
Type	ECP34-2L	تیپ
Exciter type	Brushless, Self-excited	نوع کانتر
Power factor	0.8	ضریب قدرت
Voltage	380	ولتاژ
Frequency	50 Hz	فرکانس
Speed, Rpm	1500	سرعت
Insulation class	H	کلاس عایق
Protection class	IP23	کلاس حفاظتی
Excitation	Brushless	سیستم تمریک

GENERAL INFORMATION

DIESEL GENERATOR SET

Model	DE165D5 / DE175D6	
Motor	DEUTZ BF6M1013EC	
Alternator	STAMFORD OR LEROY SOMER	
Speed Control type	Mechanical / Electrical	
Phase	Three	
Fuel Tank Capacity	370 L	
System Voltage	12V	
Frequency	50HZ	60HZ
Air Flow	10800m³/h	11500m³/h
Combustion air flow	693.3m³/h	801.2m³/h
Exhaust air flow	1799m³/h	2097m³/h
Exhaust Temperature	535°C	480°C

Engine

Maximum output(kw)	132KW(50Hz)	140KW(60Hz)
Number of Cylinders	Inline 6	
Aspiration	Turbo charged, CAC	
Cycle	6	
Fuel Type	Diesel	
Combustion Type	Direct Injection	
Cooling Type	Water cooled	
Bore	108mm	
Stroke	130mm	
Displacement	7.15L	
Compression Ratio	19:1	
Lubrication Capacity	20 liter	
Coolant Capacity	9.8 liter	

FUEL CONSUMPTION	1500 RPM	1800 RPM
	L/hr	L/hr
100% Prime Power(1)	38.5	41.8
75% Prime Power(1)	28.9	31.4
50% Prime Power(1)	19.6	21.5
25% Prime Power(1)	10.9	12.4

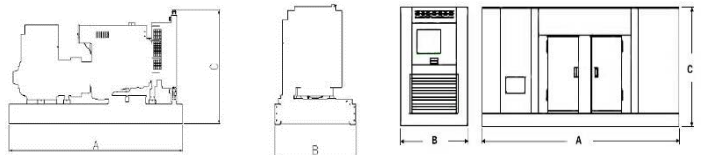
DIMENSION	OPEN	SILENT
Length (A)	2650mm	3250mm
Width (B)	1080mm	1080mm
Height (C)	1650mm	2070mm
Net Weight	2050kg	2550kg

Alternator

Insulation	Clase "H"
Excitation Type	Self-excitation or PMG
Protection class	IP23

Certificates

Engine	ISO 3046, BS 5514, DIN 6271
Alternator	UTE NFC 51-111-105-110
	ICE34-1, BS 5000-4999
	NEMA MG 21, VDE 0530
Generator Set	ISO 8528



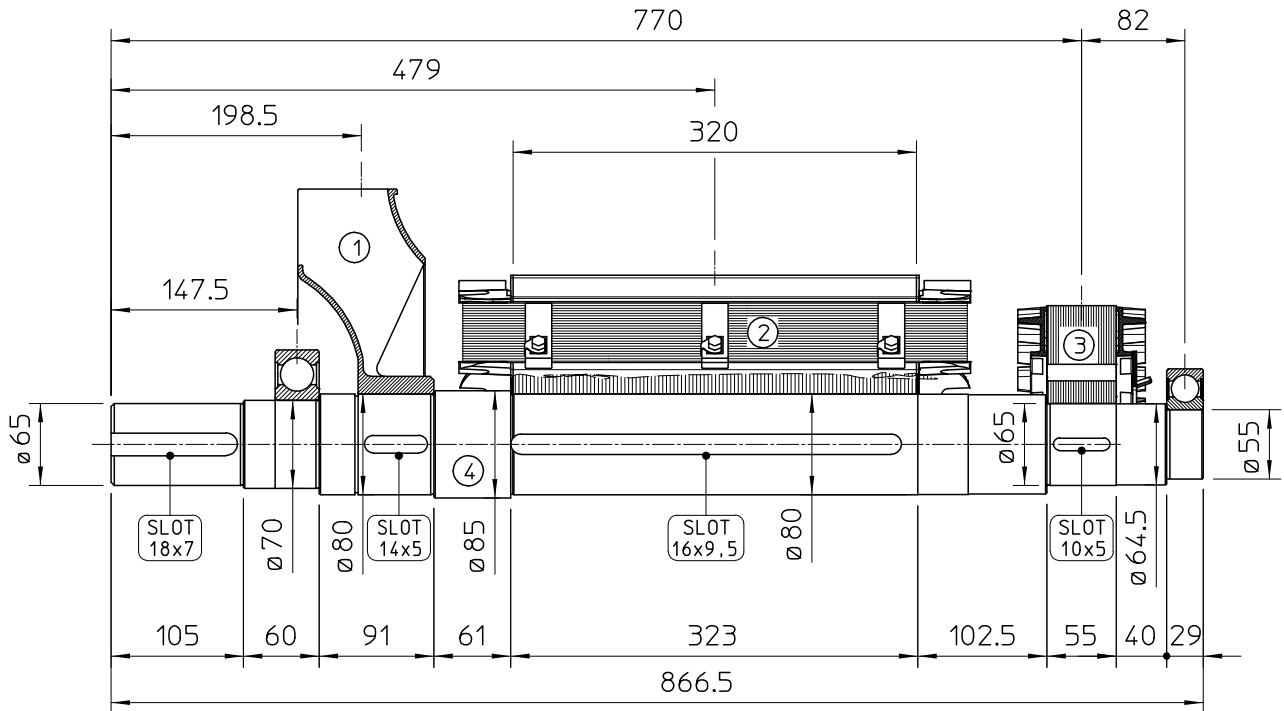
(1) Prime Power: ratings are as per DIN 6271, BS5514 and ISO-3046 with 10% overload capacity

(2) Standby Power: power available at variable load for up to a maximum of 500 hours during one year of which 300 hours may be for continuous use

(3) Operation at Altitude ≤ 1500m, Ambient temperature ≤ 40°C. If altitude higher than 1500m, each 300m will cause additional de-rating 4%.

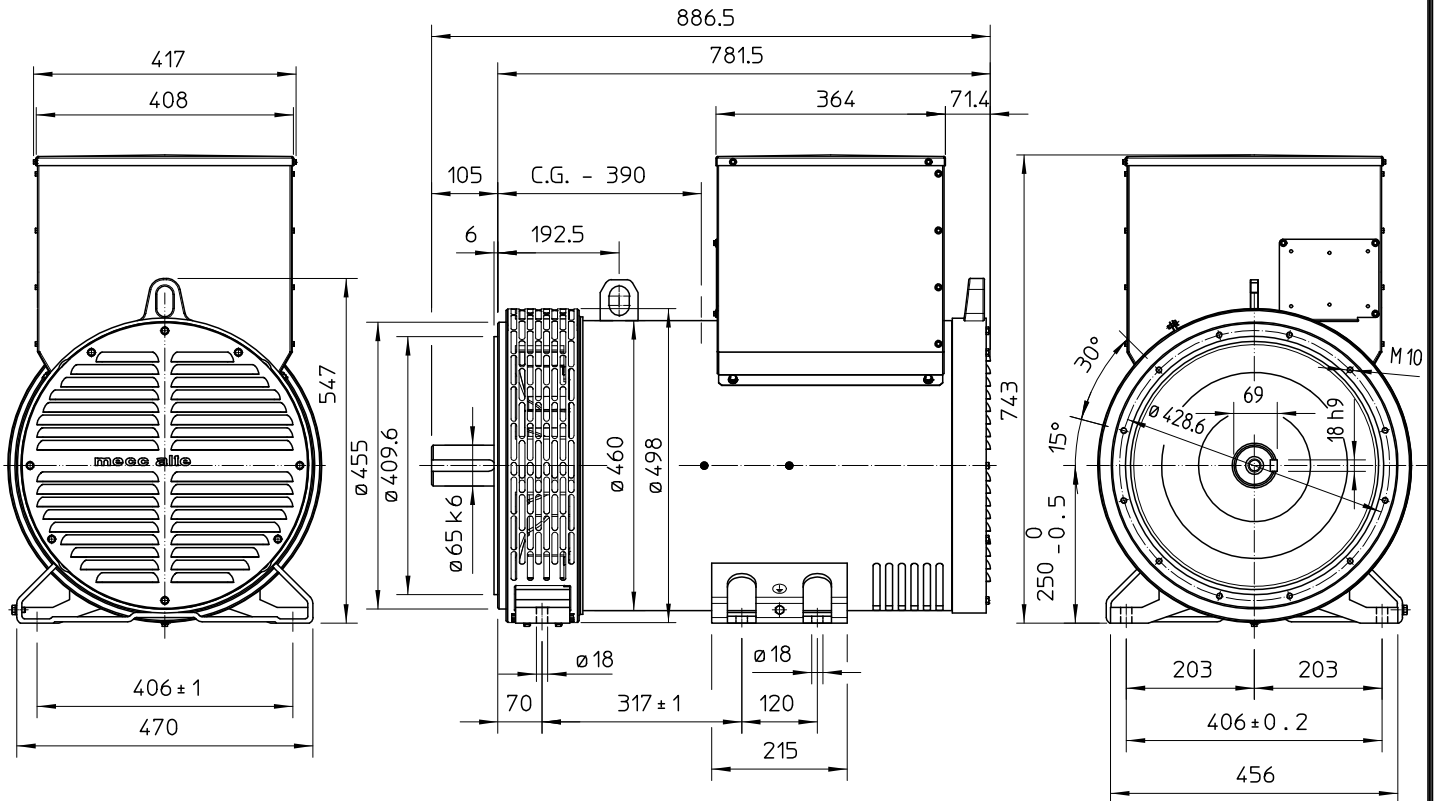
Certificacion ISO 9001:2000

TWO BEARING MOMENTS OF INERTIA



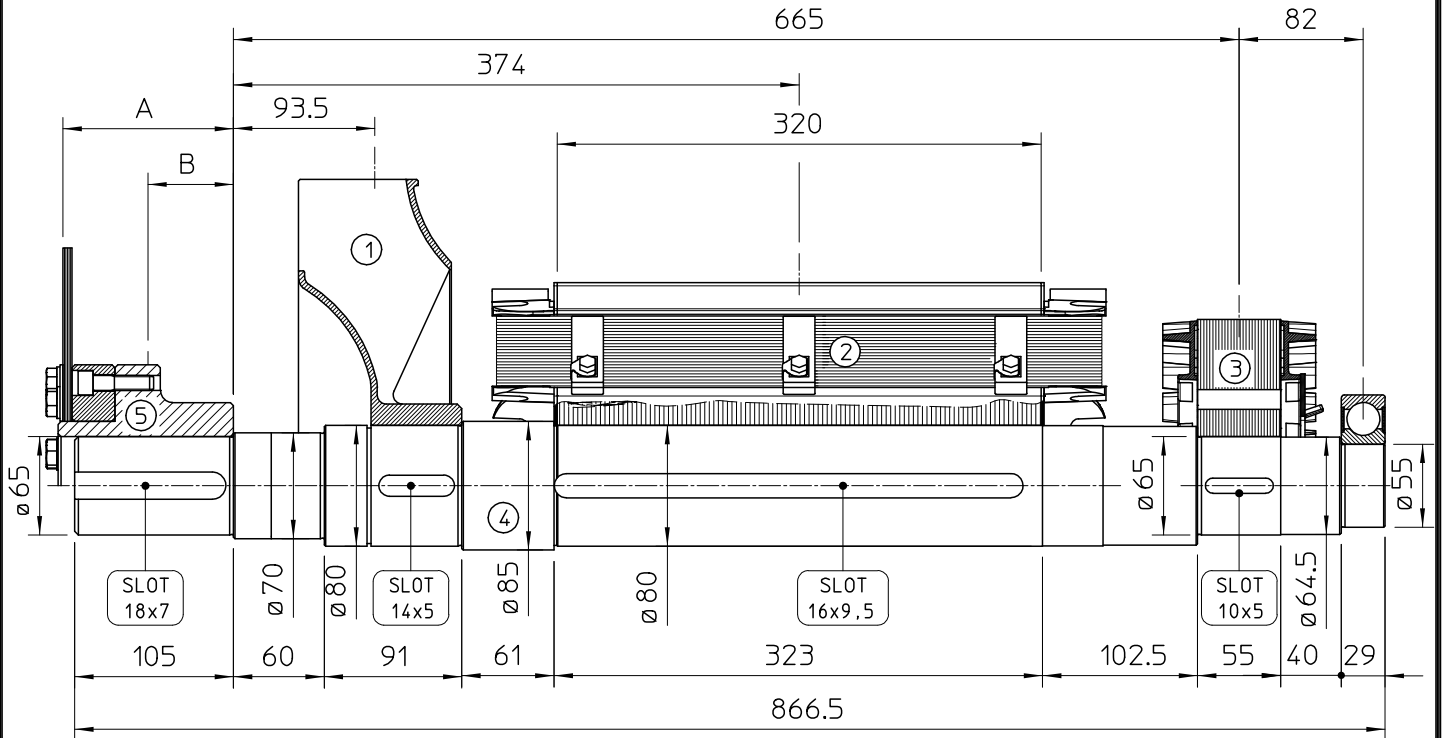
POS.	COMPONENT	WEIGHT (kg)	J (kgm ²)
1	FAN	3.6	0.0451
2	MAIN ROTOR	107.3	0.9647
3	EX. ROTOR	14.5	0.0874
4	SHAFT	29.6	0.0218
TOTAL		155	1.119

TWO BEARING DIMENSIONS



C.G.= GRAVITY CENTER

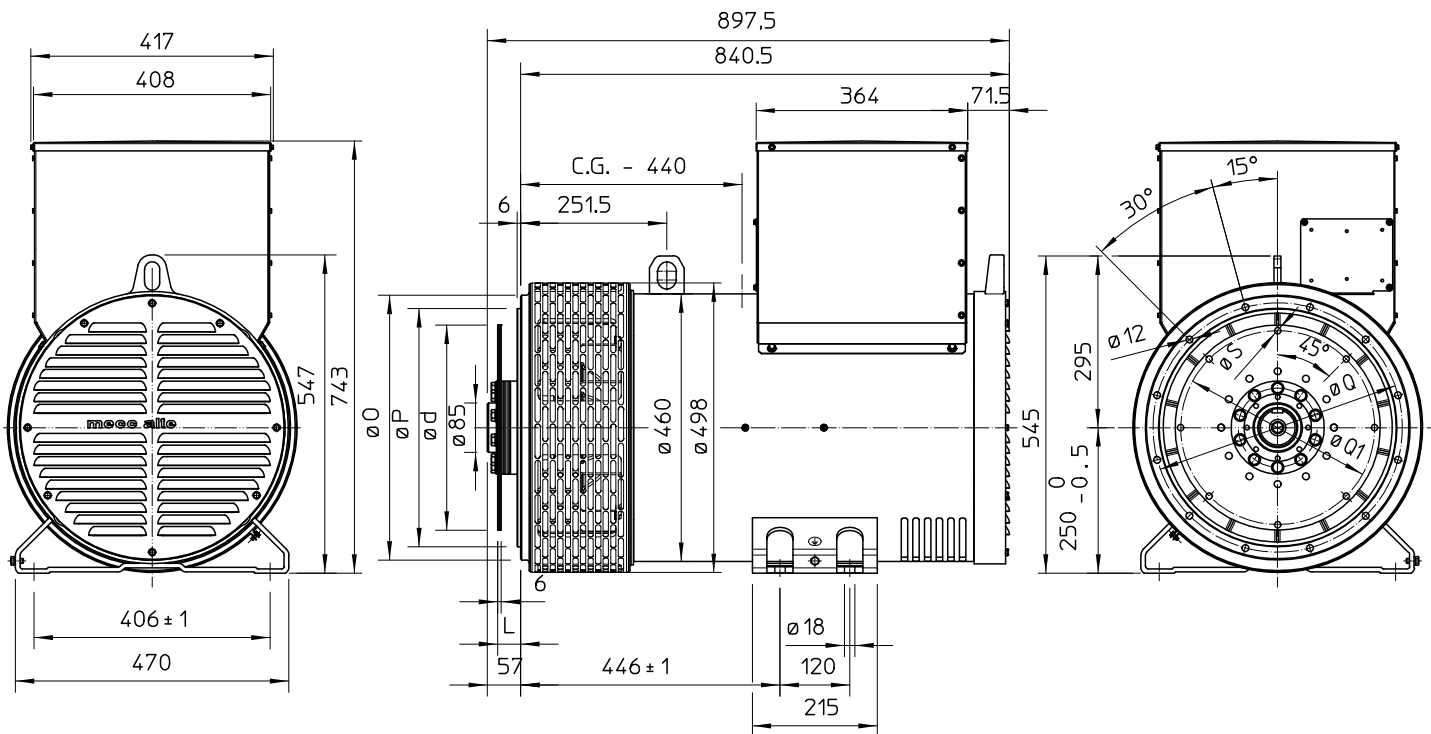
SINGLE BEARING MOMENTS OF INERTIA



POS.	COMPONENT	WEIGHT (kg)	J (kgm ²)
1	FAN	3.6	0.0451
2	MAIN ROTOR	107.3	0.9647
3	EX. ROTOR	14.5	0.0874
4	SHAFT	29.6	0.0218
TOTAL		155	1.119

SAE N°	5		SHAFTS COUPLING FLEX PLATE	
	A	B	WEIGHT kg	J kgm ²
10	112.8	35.6	13.5	0.0770
11 1/2	98.6	71.5	12.4	0.0956
14	84.4	68.6	14.8	0.2360

SINGLE BEARING DIMENSIONS



SAE N.	FLANGIA / FLANGE BRIDE / FLANSCH		
	O	P	Q
3	451	409.6	428.6
2	489	447.7	466.7
1	552	511.2	530.2

SAE N.	GIUNTI A DISCHI / DISC COUPLING DISCQUE DE MONOPALIER / SCHEIBENKUPPLUNG			
	L	d	Q1	S
10	53.8	314.32	295.27	11
11 1/2	39.6	352.42	333.37	11
14	25.4	466.72	438.15	14

C.G.= GRAVITY CENTER