

ژنراتور : Caterpillar

موتور دیزل : Caterpillar

Standby		Prime		دیزل ژنراتور
KVA	KW	KVA	KW	
2500	2000	2272	1818	



موتور دیزل		
Manufacturer	Caterpillar	تولید کننده
Model	3516B-HD TA	مدل
Number of cylinders	12	تعداد سیلندر ها
Cylinder arrangement	vertical	آرایش سیلندر ها
Displacement , Liters	78.08	جا به جایی
Bore × Stroke , mm	170× 215	قطر سیلندر × کورس پیستون
Compression Ratio	15.5:1	نسبت تراکم
Aspiration	Turbocharged Aftercooled	سیستم تنفس
Gross engine power, kWb	1818	قدرت ناخالص موتور
Fan Power, kWm	2000	قدرت فن
Combustion air flow, m ³ /min	151.7	جریان هوای احتراق
Exhaust gas temp.(after turbo) , °C	554.3 °	دمای گاز خروجی از اگزوز
Exhaust gas flow (after turbo) , m ³ /min	443.2	جریان هوای خروجی از اگزوز

ژنراتور

Manufacturer	Caterpillar	تولید کننده
Standby power at rated voltage ,KVA	2500	توان standby در ولتاژ نامی
Efficiency, %	89.3	راندمان
Power factor	0.8	ضریب قدرت
Phase	3	فاز
Frequency, Hz	50	فرکانس
Speed, Rpm	1500	سرعت
Voltage, V	380	ولتاژ
Excitation	Permanent Magnet	سیستم تمریک
Voltage Regulator	Three phase sensing	رگولاتور ولتاژ
Voltage Regulation, %	Less than +/- 1/2%	تنظیم ولتاژ
Over speed, Rpm	2250	مداکثر سرعت مجاز
Insulation class	H	کلاس عایق
Connection	Terminal strip connection	اتصال
Protection class	IP23	کلاس حفاظتی

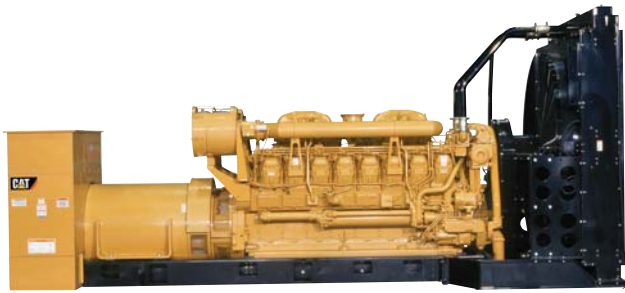


Image shown may not reflect actual package.

Mission Critical Standby 2000 e kW 2500 kVA 50 Hz 1500 rpm 400 Volts

Caterpillar is leading the power generation marketplace with Power Solutions engineered to deliver unmatched flexibility, expandability, reliability, and cost-effectiveness.

FEATURES

FUEL/EMISSIONS STRATEGY

- Low Fuel consumption

DESIGN CRITERIA

- The generator set accepts 100% rated load in one step per NFPA 110 and meets ISO 8528-5 transient response.

FULL RANGE OF ATTACHMENTS

- Wide range of bolt-on system expansion attachments, factory designed and tested
- Flexible packaging options for easy and cost effective installation

SINGLE-SOURCE SUPPLIER

- Fully prototype tested with certified torsional vibration analysis available

WORLDWIDE PRODUCT SUPPORT

- Cat dealers provide extensive post sale support including maintenance and repair agreements
- Cat dealers have over 1,800 dealer branch stores operating in 200 countries
- The Cat® S•O•SSM program cost effectively detects internal engine component condition, even the presence of unwanted fluids and combustion by-products

CAT® 3516B-HD TA DIESEL ENGINE

- Reliable, rugged, durable design
- Field-proven in thousands of applications worldwide
- Four-stroke-cycle diesel engine combines consistent performance and excellent fuel economy with minimum weight

CAT GENERATOR

- Matched to the performance and output characteristics of Cat engines
- Industry leading mechanical and electrical design
- Industry leading motor starting capabilities
- High Efficiency

CAT EMCP 4 CONTROL PANELS

- Simple user friendly interface and navigation
- Scalable system to meet a wide range of customer needs
- Integrated Control System and Communications Gateway

Mission Critical Standby 2000 kW 2500 kVA

50 Hz 1500 rpm 400 Volts



FACTORY INSTALLED STANDARD & OPTIONAL EQUIPMENT

System	Standard	Optional
Air Inlet	• Air cleaner	
Cooling	• Package mounted radiator	
Exhaust	• Exhaust flange outlet	<input type="checkbox"/> Exhaust mufflers (except Tier 4)
Fuel	• Primary fuel filter with integral water separator • Secondary fuel filters • Fuel priming pump	
Generator	• Matched to the performance and output characteristics of Cat engines • Load adjustment module provides engine relief upon load impact and improves load acceptance and recovery time • IP23 protection	<input type="checkbox"/> Oversize and premium generators <input type="checkbox"/> Permanent magnet excitation (PMG) <input type="checkbox"/> Internal excited (IE) <input type="checkbox"/> Anti-condensation space heaters
Power Termination	• Bus bar	<input type="checkbox"/> Circuit breakers, UL listed <input type="checkbox"/> Circuit breakers, IEC compliant
Control Panel	• EMCP 4 Genset Controller	<input type="checkbox"/> EMCP 4.2 <input type="checkbox"/> EMCP 4.3 <input type="checkbox"/> EMCP 4.4 <input type="checkbox"/> Generator temperature monitoring and protection <input type="checkbox"/> Load share module <input type="checkbox"/> Digital I/O module <input type="checkbox"/> Remote monitoring software
Mounting		<input type="checkbox"/> Rubber vibration isolators
Starting/Charging		<input type="checkbox"/> Battery chargers <input type="checkbox"/> Oversize batteries <input type="checkbox"/> Jacket water heater <input type="checkbox"/> Heavy duty starting system <input type="checkbox"/> Charging alternator <input type="checkbox"/> Air starting motor with control and silencer (3500 & C175 models only)
General	• Paint - Caterpillar Yellow except rails and radiators gloss black	The following options are based on regional and product configuration: <input type="checkbox"/> Seismic Certification per Applicable Building Codes: IBC 2000, IBC 2003, IBC 2006, IBC 2009, CBC 2007 <input type="checkbox"/> EU Certificate of Conformance (CE) <input type="checkbox"/> UL 2200 package <input type="checkbox"/> CSA Certification <input type="checkbox"/> EEC Declaration of Conformity <input type="checkbox"/> Enclosures- sound attenuated, weather protective <input type="checkbox"/> Automatic transfer switches (ATS) <input type="checkbox"/> Integral & sub-base fuel tanks <input type="checkbox"/> Integral & sub-base UL listed dual wall fuel tanks

Mission Critical Standby 2000 kW 2500 kVA

50 Hz 1500 rpm 400 Volts



SPECIFICATIONS

CAT GENERATOR

Cat Generator
Frame size..... 1844
Excitation..... Permanent Magnet
Pitch..... 0.6667
Number of poles..... 4
Number of bearings..... 2
Number of Leads..... 006
Insulation..... UL 1446 Recognized Class H with tropicalization and antiabrasion
- Consult your Caterpillar dealer for available voltages
IP Rating..... IP23
Alignment..... Closed Coupled
Overspeed capability..... 150
Wave form Deviation (Line to Line)..... 003.00
Voltage regulator..... 3 Phase sensing with selectable volts/Hz
Voltage regulation..... Less than +/- 1/2% (steady state)
Less than +/- 1% (no load to full load)

CAT DIESEL ENGINE

3516B-HD TA, V-16, 4-Stroke Water-cooled Diesel
Bore..... 170.00 mm (6.69 in)
Stroke..... 215.00 mm (8.46 in)
Displacement..... 78.08 L (4764.73 in³)
Compression Ratio..... 15.5:1
Aspiration..... TA
Fuel System..... Electronic unit injection
Governor Type..... ADEM3

CAT EMCP 4 SERIES CONTROLS

EMCP 4 controls including:

- Run / Auto / Stop Control
- Speed and Voltage Adjust
- Engine Cycle Crank
- 24-volt DC operation
- Environmental sealed front face
- Text alarm/event descriptions

Digital indication for:

- RPM
- DC volts
- Operating hours
- Oil pressure (psi, kPa or bar)
- Coolant temperature
- Volts (L-L & L-N), frequency (Hz)
- Amps (per phase & average)
- kW, kVA, kVAR, kW-hr, %kW, PF

Warning/shutdown with common LED indication of:

- Low oil pressure
- High coolant temperature
- Overspeed
- Emergency stop
- Failure to start (overcrank)
- Low coolant temperature
- Low coolant level

Programmable protective relaying functions:

- Generator phase sequence
- Over/Under voltage (27/59)
- Over/Under Frequency (81 o/u)
- Reverse Power (kW) (32)
- Reverse reactive power (kVA) (32RV)
- Overcurrent (50/51)

Communications:

- Six digital inputs (4.2 only)
- Four relay outputs (Form A)
- Two relay outputs (Form C)
- Two digital outputs
- Customer data link (Modbus RTU)
- Accessory module data link
- Serial annunciator module data link
- Emergency stop pushbutton

Compatible with the following:

- Digital I/O module
- Local Annunciator
- Remote CAN annunciator
- Remote serial annunciator

Mission Critical Standby 2000 kW 2500 kVA

50 Hz 1500 rpm 400 Volts



TECHNICAL DATA

Open Generator Set - - 1500 rpm/50 Hz/400 Volts		
Low Fuel Consumption		
Generator Set Package Performance		
Genset Power rating @ 0.8 pf	2500 kVA	
Genset Power rating with fan	2000 kW	
Fuel Consumption		
100% load with fan	519.7 L/hr	137.3 Gal/hr
75% load with fan	382.1 L/hr	100.9 Gal/hr
50% load with fan	260.1 L/hr	68.7 Gal/hr
Cooling System¹		
Engine Coolant capacity with radiator/exp. tank	382.0 L	100.9 gal
Engine coolant capacity	233.0 L	61.6 gal
Radiator coolant capacity	149.0 L	39.4 gal
Inlet Air		
Combustion air inlet flow rate	151.7 m ³ /min	5357.2 cfm
Exhaust System		
Exhaust stack gas temperature	554.3 ° C	1029.7 ° F
Exhaust gas flow rate	443.2 m ³ /min	15651.5 cfm
Exhaust flange size (internal diameter)	203.2 mm	8.0 in
Exhaust system backpressure (maximum allowable)	6.7 kPa	26.9 in. water
Heat Rejection		
Heat rejection to coolant (total)	751 kW	42709 Btu/min
Heat rejection to exhaust (total)	2080 kW	118289 Btu/min
Heat rejection to aftercooler	379 kW	21554 Btu/min
Heat rejection to atmosphere from engine	166 kW	9440 Btu/min
Heat rejection to atmosphere from generator	94.2 kW	5357.1 Btu/min
Alternator²		
Motor starting capability @ 30% voltage dip	6537 skVA	
Frame	1844	
Temperature Rise	125 ° C	225 ° F
Lube System		
Sump refill with filter	401.3 L	106.0 gal
Emissions (Nominal)³		
NOx mg/nm ³	3351.3 mg/nm ³	
CO mg/nm ³	387.1 mg/nm ³	
HC mg/nm ³	53.1 mg/nm ³	
PM mg/nm ³	26.8 mg/nm ³	

¹ For ambient and altitude capabilities consult your Cat dealer. Air flow restriction (system) is added to existing restriction from factory.

² Generator temperature rise is based on a 40° C (104° F) ambient per NEMA MG1-32.

³ Emissions data measurement procedures are consistent with those described in EPA CFR 40 Part 89, Subpart D & E and ISO8178-1 for measuring HC, CO, PM, NOx. Data shown is based on steady state operating conditions of 77°F, 28.42 in HG and number 2 diesel fuel with 35° API and LHV of 18,390 btu/lb. The nominal emissions data shown is subject to instrumentation, measurement, facility and engine to engine variations. Emissions data is based on 100% load and thus cannot be used to compare to EPA regulations which use values based on a weighted cycle.

Mission Critical Standby 2000 ekW 2500 kVA

50 Hz 1500 rpm 400 Volts



RATING DEFINITIONS AND CONDITIONS

Applicable Codes and Standards: AS1359, CSA C22.2 No 100-04, UL142, UL489, UL601, UL869, UL2200, NFPA 37, NFPA 70, NFPA 99, NFPA 110, IBC, IEC60034-1, ISO3046, ISO8528, NEMA MG 1-22, NEMA MG 1-33, 72/23/EEC, 98/37/EC, 2004/108/EC

Mission Critical Standby - Output available with varying load for the duration of the interruption of the normal source power. Average power output is 85% of the standby power rating. Typical peak demand up to 100% of standby rated ekW for 5% of the operating time. Typical operation is 200 hours per year, with maximum expected usage of 500 hours per year. Fuel stop power in accordance with ISO3046. Standby ambients shown indicate ambient temperature at 100% load which results in a coolant top tank temperature just below the shutdown temperature.

Ratings are based on SAE J1349 standard conditions. These ratings also apply at ISO3046 standard conditions. **Fuel Rates** are based on fuel oil of 35° API (16° C or 60° F) gravity having an LHV of 42 780 kJ/kg (18,390 Btu/lb) when used at 29° C (85° F) and weighing 838.9 g/liter (7.001 lbs/U.S. gal.). **Additional Ratings** may be available for specific customer requirements. Consult your Cat representative for details.

Mission Critical Standby 2000 kW 2500 kVA

50 Hz 1500 rpm 400 Volts



DIMENSIONS

Package Dimensions	
Length	Information not available at this time.
Width	
Height	

NOTE: For reference only - do not use for installation design. Please contact your local dealer for exact weight and dimensions. (General Dimension Drawing #2336966).

www.Cat-ElectricPower.com

2013 Caterpillar
All rights reserved.

Materials and specifications are subject to change without notice.
The International System of Units (SI) is used in this publication.

CAT, CATERPILLAR, their respective logos, "Caterpillar Yellow," the "Power Edge" trade dress, as well as corporate and product identity used herein, are trademarks of Caterpillar and may not be used without permission.

Source: European Sourced

March 04 2013