

ژنراتور : Caterpillar

موتور دیزل : Caterpillar

Standby		Prime		دیزل ژنراتور
KVA	KW	KVA	KW	
1100	880	1000	800	



موتور دیزل		
Manufacturer	Caterpillar	تولید کننده
Model	C32 ATAAC	مدل
Number of cylinders	12	تعداد سیلندر ها
Cylinder arrangement	vertical	آرایش سیلندر ها
Displacement , Liters	32.10	جا به جایی
Bore × Stroke , mm	137.20× 165.10	قطر سیلندر × کورس پیستون
Compression Ratio	15.0:1	نسبت تراکم
Aspiration	Turbocharged Aftercooled	سیستم تنفس
Gross engine power, kWb	800	قدرت ناخالص موتور
Fan Power, kWm	880	قدرت فن
Combustion air flow, m ³ /min	66.0	جریان هوای احتراق
Exhaust gas temp.(after turbo) , °C	508.7 °	دمای گاز خروجی از اگزوز
Exhaust gas flow (after turbo) , m ³ /min	180.1	جریان هوای خروجی از اگزوز

ژنراتور

Manufacturer	Caterpillar	تولید کننده
Standby power at rated voltage ,KVA	1100	توان standby در ولتاژ نامی
Efficiency, %	90.3	راندمان
Power factor	0.8	ضریب قدرت
Phase	3	فاز
Frequency, Hz	50	فرکانس
Speed, Rpm	1500	سرعت
Voltage, V	380	ولتاژ
Excitation	PM	سیستم تمریک
Voltage Regulator	Three phase sensing	رگولاتور ولتاژ
Voltage Regulation, %	Less than $\pm 1/2\%$	تنظیم ولتاژ
Over speed, Rpm	2250	مداکثر سرعت مجاز
Insulation class	H	کلاس عایق
Connection	Terminal strip connection	اتصال
Protection class	IP23	کلاس حفاظتی

Diesel Generator Set

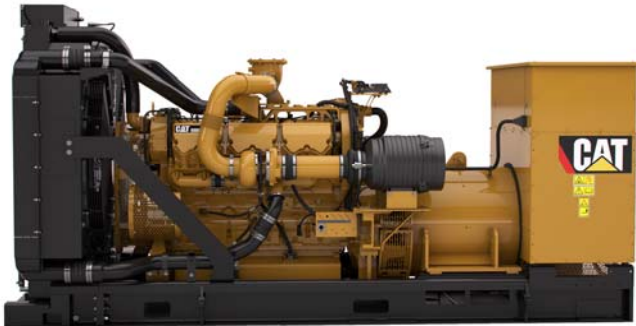


Image shown may not reflect actual package

Standby 880 kW 1100 kVA 50 Hz 1500 rpm 400 Volts

Caterpillar is leading the power generation Market place with Power Solutions engineered to deliver unmatched flexibility, expandability, reliability, and cost-effectiveness.

FUEL/EMISSIONS STRATEGY

- Low fuel consumption

DESIGN CRITERIA

- The generator set accepts 100% rated load in one step per NFPA 110 and meets ISO 8528-5 transient response.

UL 2200

- UL 2200 packages available. Certain restrictions may apply. Consult with your Cat dealer.

FULL RANGE OF ATTACHMENTS

- Wide range of bolt-on system expansion attachments, factory designed and tested
- Flexible packaging options for easy and cost effective installation

SINGLE-SOURCE SUPPLIER

- Fully prototype tested with certified torsional vibration analysis available

WORLDWIDE PRODUCT SUPPORT

- Cat® dealers provide extensive post sale support including maintenance and repair agreements
- Cat dealers have over 1,800 dealer branch stores operating in 200 countries.
- The Cat® SOSSM program effectively detects internal engine component condition, even the presence of unwanted fluids and combustion by products.

CAT C32 ATAAC DIESEL ENGINE

- Utilizes ACERT™ Technology
- Reliable, rugged, durable design
- Four-stroke diesel engine combines consistent performance and excellent fuel economy with minimum weight

CAT GENERATOR

- Matched to the performance and output characteristics of Caterpillar engines
- Single point access to accessory connections
- UL 1446 Recognized Class H insulation

CAT EMCP 4 CONTROL PANELS

- Simple user friendly interface and navigation
- Scalable system to meet a wide range of customer needs
- Integrated Control System and Communications Gateway

STANDBY 880 ekW 1100 kVA

50 Hz 1500 rpm 400 Volts



Factory Installed Standard & Optional Equipment

System	Standard	Optional
Air Inlet	<ul style="list-style-type: none"> • Single element canister type air cleaner with service indicator 	<input type="checkbox"/> Dual element air cleaners
Cooling	<ul style="list-style-type: none"> • Package mounted radiator 	
Exhaust	<ul style="list-style-type: none"> • Exhaust flange outlet 	<input type="checkbox"/> Mufflers
Fuel	<ul style="list-style-type: none"> • Secondary fuel filters • Fuel cooler • Fuel priming pump 	
Generator	<ul style="list-style-type: none"> • Matched to the performance and output characteristics of Cat engines 	<input type="checkbox"/> Oversize & premium generators <input type="checkbox"/> Permanent magnet excitation (PMG) <input type="checkbox"/> Internal excitation (IE) <input type="checkbox"/> Winding temperature detectors <input type="checkbox"/> Anti-condensation space heaters
Power Termination	<ul style="list-style-type: none"> • Bus bar 	<input type="checkbox"/> Circuit breakers, UL listed <input type="checkbox"/> Circuit breakers, IEC listed <input type="checkbox"/> Bottom cable entry <input type="checkbox"/> Right, left, and/or rear power termination
Governor	<ul style="list-style-type: none"> • ADEM™ A4 	<input type="checkbox"/> Load share module
Control Panel	<ul style="list-style-type: none"> • EMCP 4 	<input type="checkbox"/> EMCP 4.2 <input type="checkbox"/> EMCP 4.3 <input type="checkbox"/> EMCP 4.4 <input type="checkbox"/> Local & remote annunciator modules <input type="checkbox"/> Digital I/O Module <input type="checkbox"/> Generator temperature monitoring & protection
Mounting		<input type="checkbox"/> Rubber vibration isolators <input type="checkbox"/> Spring type vibration isolator <input type="checkbox"/> IBC seismic certification
Starting / Charging	<ul style="list-style-type: none"> • 24 volt starting motor(s) • Battery disconnect switch 	<input type="checkbox"/> Battery charger <input type="checkbox"/> Charging alternator <input type="checkbox"/> Batteries with rack <input type="checkbox"/> Oversize batteries <input type="checkbox"/> Ether starting aids <input type="checkbox"/> Heavy duty starting motors <input type="checkbox"/> Barring device (manual) <input type="checkbox"/> Jacket water heater
General	<ul style="list-style-type: none"> • Paint – Caterpillar Yellow except rails and radiators gloss black 	<input type="checkbox"/> UL 2200 listed <input type="checkbox"/> CSA Certification

STANDBY 880 ekW 1100 kVA

50 Hz 1500 rpm 400 Volts



SPECIFICATIONS

CAT GENERATOR

Frame	1402
Excitation	PM
Pitch.....	0.6667
Number of poles.....	4
Number of leads.....	6
Number of bearings	Single Bearing
Insulation	Class H
IP rating	Drip proof IP23
Over speed capability - % of rated.....	125%
Wave form deviation.....	2 %
Voltage regulator.....	3 phase sensing
Voltage regulation.....	Less than $\pm 1/2\%$ (steady state) Less than $\pm 1/2\%$ (3% speed change)

CAT DIESEL ENGINE

C32 ATAAC, V-12, 4 stroke, water-cooled diesel

Bore	145.00 mm (5.71 in)
Stroke	162.00 mm (6.38 in)
Displacement	32.10 (1958.86 in ³)
Compression ratio.....	15.0:1
Aspiration.....	ATAAC
Fuel system.....	MEUI
Governor Type.....	ADEM™ A4

CAT EMCP 4 CONTROL PANELS

EMCP 4 controls including:

- Run / Auto / Stop Control
- Speed & Voltage Adjust
- Engine Cycle Crank
- Emergency stop pushbutton

EMCP 4.2 controller features:

- 24-volt DC operation
- Environmental sealed front face
- Text alarm/event descriptions

Digital indication for:

- RPM
- DC volts
- Operating hours
- Oil pressure (psi, kPa or bar)
- Coolant temperature
- Volts (L-L & L-N), frequency (Hz)
- Amps (per phase & average)
- Power Factor (per phase & average)
- kW (per phase, average & percent)
- kVA (per phase, average & percent)
- kVAr (per phase, average & percent)
- kW-hr & kVAr-hr (total)

Warning/shutdown with common LED indication of shutdowns for:

- Low oil pressure
- High coolant temperature
- Overspeed
- Emergency stop
- Failure to start (overcrank)
- Low coolant temperature
- Low coolant level

Programmable protective relaying functions:

- Generator phase sequence
- Over/Under voltage (27/59)
- Over/Under Frequency (81 o/u)
- Reverse Power (kW) (32)
- Reverse Reactive Power (kVAr) (32RV)
- Overcurrent (50/51)

Communications

- Customer data link (Modbus RTU)
- Accessory module data link
- Serial annunciator module data link

- 6 programmable digital inputs
- 4 programmable relay outputs (Form A)
- 2 programmable relay outputs (Form C)
- 2 programmable digital outputs

Compatible with the following optional modules:

- Digital I/O module
- Local Annunciator
- Remote annunciator
- RTD module
- Thermocouple module

STANDBY 880 ekW 1100 kVA

50 Hz 1500 rpm 400 Volts



Technical Data

Open Generator Set - 1500 rpm/50 Hz/400 Volts		
Low Fuel Consumption		
Generator Set Package Performance		
Genset Power rating @ 0.8 pf	1100 kVA	
Genset Power Rating with fan	880 ekW	
Fuel Consumption		
100% Load with fan	226.3 L/hr	59.8 Gal/hr
75% Load with fan	170.3 L/hr	45.0 Gal/hr
50% Load with fan	117.3 L/hr	31.0 Gal/hr
Cooling System¹		
Air flow restriction (system)	0.12 kPa	0.48 in. water
Air flow (max @ rated speed for radiator arrangement)	883.0 m ³ /min	31182 cfm
Engine coolant capacity with radiator	403.5 L	106.6 gal
Engine coolant capacity	233.2 L	61.6 gal
Radiator coolant capacity	170.3 L	45.0 gal
Inlet Air		
Combustion air inlet flow rate	66.0 m ³ /min	2332 cfm
Exhaust System		
Exhaust stack gas temperature (engine out)	508.7 °C	947.7 °F
Exhaust gas flow rate	180.1 m ³ /min	6359.7 cfm
Exhaust flange size	203.2 mm	8 in
Exhaust system backpressure (maximum allowable)	10 kPa	40.2 in water
Heat Rejection		
Heat rejection to coolant	319.5 kW	18167 Btu/min
Heat rejection to exhaust (total)	818.1 kW	46518 Btu/min
Heat rejection to aftercooler	180.9 kW	10283 Btu/min
Heat rejection to atmosphere from engine	119.5 kW	6797 Btu/min
Heat rejection to atmosphere from generator	49.3 kW	2806 Btu/min
Alternator²		
Motor starting capability @30% voltage dip	2297 skVA	
Frame	1402	
Temperature Rise	150 °C	270 °F
Lube System		
Sump refill with filter	99 L	26.2 gal
Emissions (Nominal)³		
NOx g/hp-hr	7.07 g/hp-hr	
CO g/hp-hr	1.14 g/hp-hr	
HC g/hp-hr	0.02 g/hp-hr	
PM g/hp-hr	0.07 g/hp-hr	

¹ For ambient and altitude capabilities consult your Cat dealer. Air flow restriction (system) is added to existing restriction from factory.

² Generator temperature rise is based on a 40 degree C ambient per NEMA MG1-32. UL 2200 Listed packages may have oversized generators with a different temperature rise and motor starting characteristics.

³ Emissions data measurement procedures are consistent with those described in EPA CFR 40 Part 89, Subpart D & E and ISO8178-1 for measuring HC, CO, PM, NOx. Data shown is based on steady state operating conditions of 77°F, 28.42 in HG and number 2 diesel fuel with 35° API and LHV of 18,390 btu/lb. The nominal emissions data shown is subject to instrumentation, measurement, facility and engine to engine variations. Emissions data is based on 100% load and thus cannot be used to compare to EPA regulations which use values based on a weighted cycle.

STANDBY 880 ekW 1100 kVA

50 Hz 1500 rpm 400 Volts



RATING DEFINITIONS AND CONDITIONS

Applicable Codes and Standards:

AS1359,CSAC22.2 No100-04, UL142,UL489, UL601, UL869, UL2200, NFPA37, NFPA70, NFPA99, NFPA110,IBC, IEC60034-1, ISO3046, ISO8528, NEMA MG1-22, NEMA MG1-33, 72/23/EEC, 98/37/EC, 2004/108/EC

Standby - Output available with varying load for the duration of the interruption of the normal source power. Average power output is 70% of the standby power rating. Typical operation is 200 hours per year, with maximum expected usage of 500 hours per year. Standby power in accordance with ISO8528. Fuel stop power in accordance with ISO3046.

Ratings are based on SAE J1349 standard conditions. These ratings also apply at ISO3046 standard conditions

Fuel Rates are based on fuel oil of 35° API [16° C (60° F)] gravity having an LHV of 42 780 kJ/kg (18,390 Btu/lb) when used at 29° C (85° F) and weighing 838.9 g/liter (7.001 lbs/U.S. gal.).

Additional ratings may be available for specific customer requirements, contact your Cat Dealer for details. For information regarding Low Sulfur fuel and Biodiesel capability, please consult your Cat Dealer.

STANDBY 880 ekW 1100 kVA

50 Hz 1500 rpm 400 Volts



DIMENSIONS

Package Dimensions		
Length	4234 mm	166.7 in
Width	2010 mm	79.1 in
Height	2174 mm	85.6 in

NOTE: For reference only - do not use for installation design. Please contact your local dealer for exact weight and dimensions.

www.Cat-ElectricPower.com

Feature Code: C32DR40

Gen. Arr. Number: 432-6118

Sourced: U.S. Sourced

EPD0164-B (10/13)

©2013 Caterpillar
All rights reserved.

Materials and specifications are subject to change without notice. The International System of Units (SI) is used in this publication.

CAT, CATERPILLAR, SAFETY.CAT.COM their respective logos, "Caterpillar Yellow," the "Power Edge" trade dress as well as corporate and product identity used herein, are trademarks of Caterpillar and may not be used without permission.